

Remote Learning Update

It is hard to believe that we are already in our fourth week of this term. We hope that you and your family have started to settle into the new normal we find ourselves in. Thank you for all the work you are doing in coping with remote learning, particularly the use of Google Classroom and Tapestry. The engagement we are seeing is fantastic and we have seen some great work taking place at home. We have pleasure in sharing some of this with you in our gallery of work at the end of this newsletter.

We are aware that some of you are suffering because of illness and or losing money as a result of the pandemic. This is tremendously hard. Then you are being asked to do remote learning with your children - an expectation of four hours a day for Key Stage 2 children from the DfE, which is a really big ask. Please remember that you know your family better than anyone and if it looks like your child is melting down or you're struggling to do everything required of you as a parent, whilst juggling work yourself, then just do some of it. Do your best and go easy on yourself. Encourage your child to do what they can and we'll encourage them too. Please understand that we're not going to penalise anyone because it's just too hard to do home working alongside looking after a family. Please also remember that we are at the end of a phone call or an email if you require any support at all. Mrs Proost, our home school link worker is available every day to offer advice to families who are struggling for whatever reason.

New Minibus

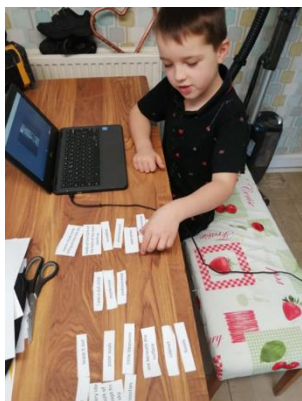


Some of you may have noticed that we have taken delivery of our brand-new school minibus which we are already using daily for the Knowle bus service. The provision of a second bus now also means that in the future we will be able to take a whole class out on trips and groups to sports festivals, which will save on the cost of hiring coaches. We are sure you'll agree that it looks very smart... you may recognise some of the children featured on the back of the bus!

Worship

Friday's celebration worship is quickly becoming the highlight of our week. It is an absolute joy to see so many children joining those in school remotely. It is clear how much they enjoy seeing one another too. It was also lovely to see Mrs Way and meet baby Evan for the first time recently. Friday worship happens every Friday at 2.30pm. The meeting nickname to access on Google Meet is Friday worship.

Chrome Books



Last week we received our allocation of 14 Chromebooks from the Department for Education. The number of families requesting a device was more than double our allocation and so we made an appeal to organisations who we hoped might be able to help. We were overwhelmed and absolutely delighted with the response, receiving a further five Chromebooks from Wickham Parish Council, two from Meon Valley Lions Club and five from Rotary Club of Fareham Meon. Additionally, we have received over £1,000 in donations from members of our community, many of whom responded to our appeal for support through St Nicholas Church. We would like to thank them all for their

generosity. Please let us know if you feel your child would benefit from a Chromebook on loan and we will do our best to arrange this for you.

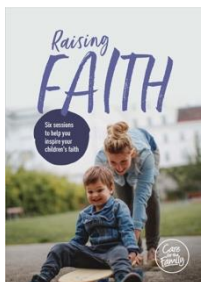
Food Parcels



You may have seen the recent press coverage concerning the quality of the free school meal parcels being provided to those eligible whilst they are at home in lockdown. We are pleased to be continuing to work with our catering partner, HC3S, who provide our weekly parcels, as they did in the first lockdown. We are also delighted to announce that we have formed a new partnership with Meon Valley Food Bank, who have kindly donated items such as pasta, cereal, soups and toiletries and Meon Valley Butchers who are providing us with fresh meat, sausage rolls, pies and eggs. Mrs Proost, our Home School Link Worker, has been out and about in the minibus with Mr Cutter (senior) on a Tuesday delivering them to many of our families. Do give them a wave if you see them out and about!

If your circumstances have changed recently and you think that you might be eligible for free school meals, please use this link to check your eligibility <https://www.cloudforedu.org.uk/ofsm/hants>. Alternatively, please call the school office and we will be happy to help you in any way we can.

Raising Faith Course



Reverend Jane has asked us to make families aware of a course running locally from 1st February via Zoom (please see attached flyer). Raising Faith is a flexible, six-part resource that explores how Christian families can create strong and healthy foundations of faith in their children. To find out more information or to sign up go to:

<http://stfaithslee.org/raising-faith/>.

Lateral Flow Testing

In line with government guidance, we began Covid-19 rapid-testing of our staff team this week. This testing regime aims to reduce transmission of COVID-19 by early identification of asymptomatic carriers of the virus. Testing is not compulsory and will not replace any of our robust protective measures that are already in place to help keep our school as safe as possible. There are no plans to test primary school children at present.

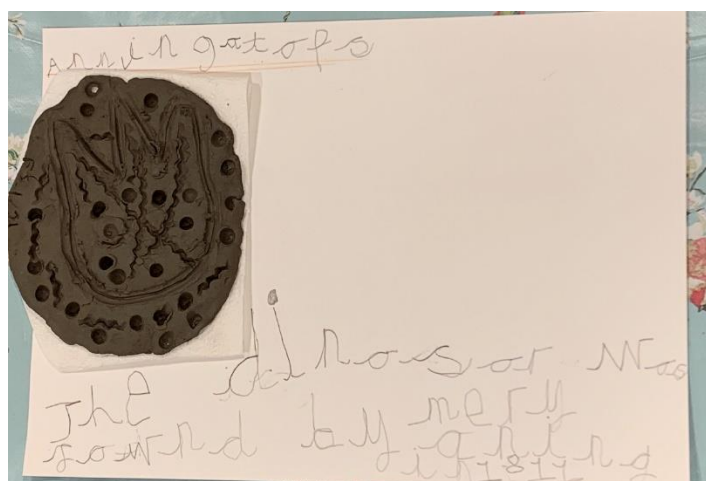
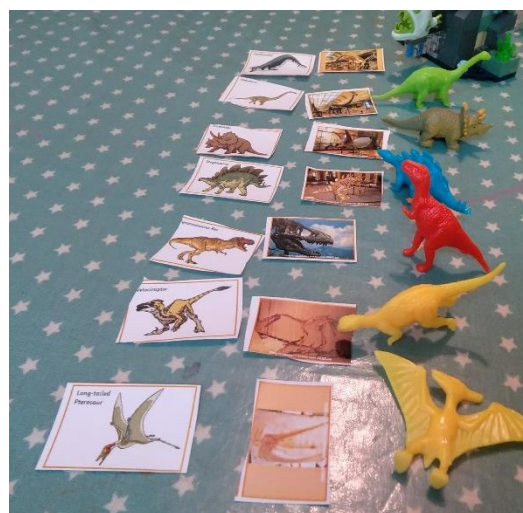
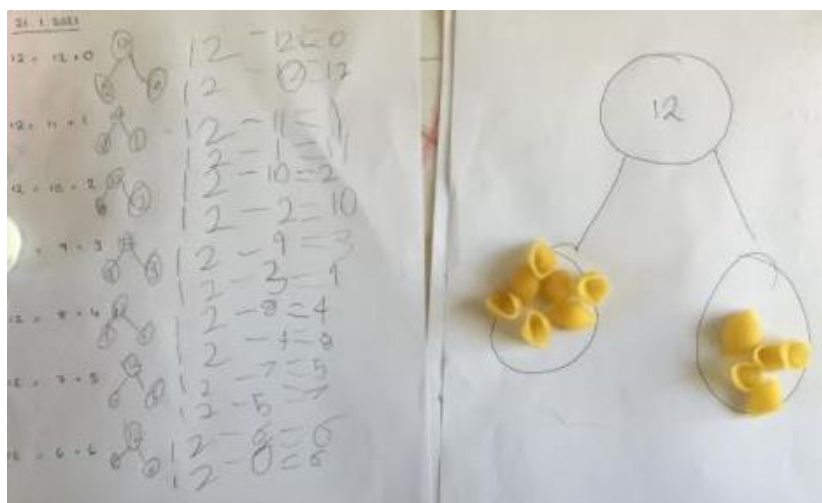
Should a member of staff receive a positive result from the test they, along with identified close contacts, will need to self-isolate following government guidelines. The member of staff will then need to arrange a PCR test for confirmation. This will mean that we may need to close any bubbles affected within the school and, if this is the case, we will contact you to let you know.

Google Classroom

The teaching staff have been working hard to get to grips with remote learning over the last few weeks and are finding ever-innovative ways of engaging the children. We would like to thank you for your patience whilst we have been setting up the technology around this. Please note that any work 'turned in' will always be looked at by an adult in school but may not always receive a written comment. In line with our marking policy, the purpose of any feedback is always on ensuring that it has an impact on learning. Where feedback will have an impact in moving learning on or addressing errors and misconceptions, it will be given. This may mean that work is sometimes returned to a child for them to edit and improve.

Wherever possible we ask that work is turned in during the day so that the staff have time to check, mark and respond if necessary. It may not always be possible for them to do this for any work turned in during the evening or at weekends.

Fantastic Work Gallery



Dear Diary

December 22

Today I woke up feeling chilly. First I got dressed in my snuggly clothes and went down stairs. I ate ~~my~~ ^{quickly} breakfast and rode my bike to the beach. I wonder if Jim is going to discover ^{little} any treasures ^{today} ~~today~~. I started to look for curiosities and I looked ^{big rocks} under ~~rocks~~. Suddenly I found a gigantic slab of rock. I couldn't lift the heavy big rock. Just at that moment I saw 2 quarrymen I called them to come and help me. They came to help me lift it up I said don't drop it! Finally I started to ^{helping} ~~helping~~ lift it carefully because I didn't want to break it. ^{while} ~~After~~ a ~~few~~ something was poking out of the slab X but what could it be!

How would the illustrator have known which pictures to have drawn to illustrate the book?

The words and phrases. For example the phrase in the book 'green green island', the illustrator would take time to think about what to illustrate. The illustrator would think of ideas of what that island would look like.

Look at the words only.

Which words and phrases would help the illustrator?

The phrases: cool, blue lagoon, white, sandy beaches, leafy green forests, brightly coloured butterflies, strange, wondrous animals and noisy red parrots. These phrases would help the illustrator come up with a landscape to include the animals described in the picture.

Now look at the pictures.

Can you see evidence of the words you highlighted, in the picture?

Yes, for example, on page 3, the phrase: 'leafy green forests', the reader can see 'brightly coloured butterflies' in the illustration. Another piece of evidence is on page 1, the phrase: 'white sandy beaches'. The reader sees white sandy beaches in the picture. The last piece of evidence I would like to show is on page 4, the term 'silvery fish', is shown in the picture on page 4.

Task: Explain the effect this language has on the reader.

Word/phrases	Effect
White, sandy beaches	This makes the reader think of a tropical location that they may want to visit.
A blue, blue sea	The reader visualises a large, open blue sea with colourful fish and sea animals, like whales.
Came by moonlight	The picture in the reader's mind, is probably a bright, shiny moon illuminating and reflecting over the open sea.
Silvery fish	The bright, silvery fish dart through the sea in every direction to find food around their beautiful ocean.
Sweet heavy scent of the flowers	The flowers scent spreads around the sandy scenery bringing a fresh smell to the islanders' noses.
Gentle, smiling people	These cheerful islanders wander around their own pretty island. They can learn new things and build strategies any time.

September 1918

Dear Diary

I woke up and I was feeling warm, I went downstairs to get my breakfast, I had fresh bread and eggs, it was delicious. Then I got dressed, I popped on my special fossil hunting clothes! When I was ready I skipped to the beach and started to fossil hunt.

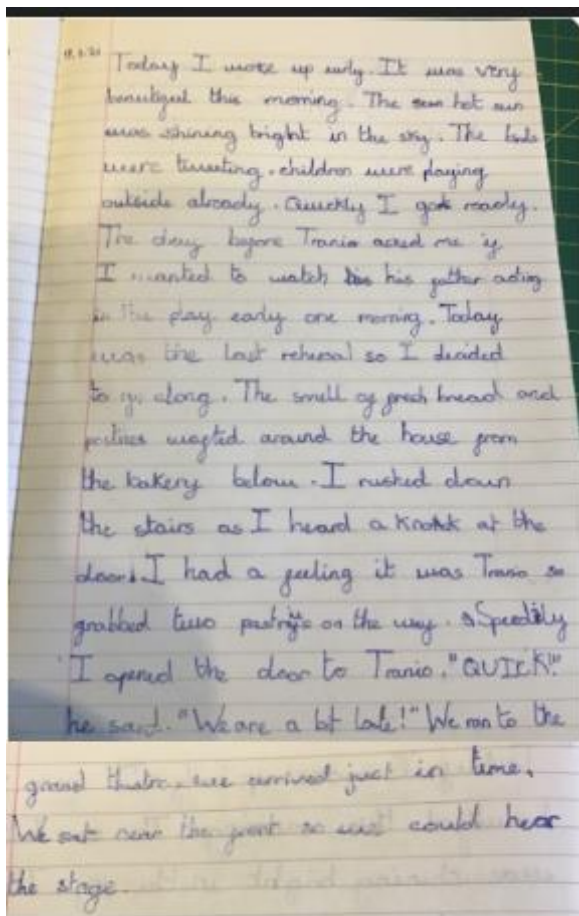
I must have been on the beach all day, I was feeling cold and tired and shivery when I saw something popping out of a cliff, it was a massive rock. I thought to myself I wonder what's inside that, so I called some Quarrymen over to help me carry it back to my house.

When I got home I started to chip away to discover what was inside the rock. When I found out that it was a dinosaur head I was so excited, this is the most exciting day of my life.

I called my friend Elizabeth who brought over a scientist from London, they were very amazed and impressed at what I had found. The scientist is going to take the dinosaur to the museum so everyone can see it.

I am enormously proud.

Mary Anning



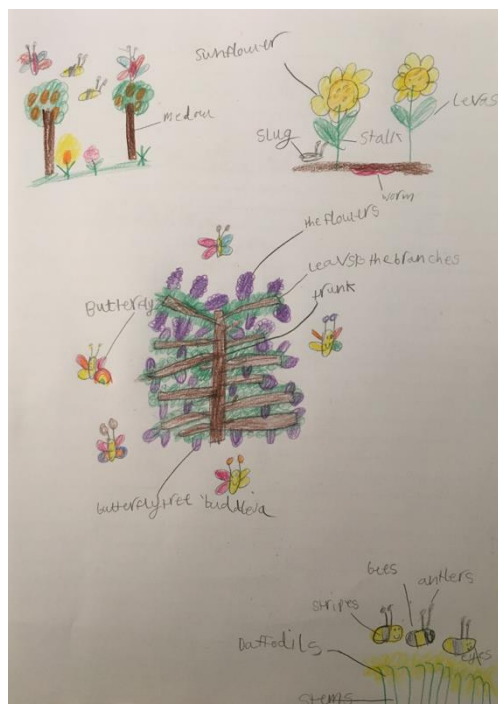
Challenge:

Using only what you've read so far (pages 1-6), what do you think may happen in the story?

I think the mountain that smokes and rumbles is actually a volcano and one day it will erupt and the whole population will be wiped out. A bit like covid 19 is doing to our population.

Write a paragraph to tell me your predictions.

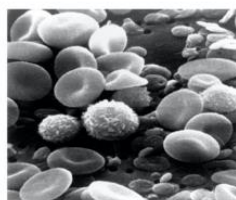
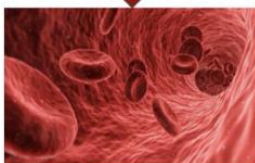
The village people were just having a normal day, hunting, fishing, chatting, and then the mountain started to rumble and smoke. Something fiery and hot, that the village people didn't know of, started to pour down the side of the mountain. The people shouted and screamed, panicking as they tried to gather everything together to escape. They got the children and animals and told the fisherman to get the boats ready and ran towards the ocean. On the beach the people climbed aboard the boats and stood in the water to escape the lava which was coming closer. The turtles swam away and the eggs got covered in lava and ash. The new born turtles couldn't see the moon light as there was so much ash and smoke. Instead they saw the reflection of the lava and tried to escape. Some of them made it to the sea. The parrots flew off as soon as the eruption started and other birds quickly followed. The island went totally quiet apart from the sound of explosions and eruptions.



Clever Blood Facts!

Red Blood Cells

Red Blood cells deliver oxygen from the lungs, to the heart, and then to the muscles. They are very clever because they also remove carbon dioxide from the body.

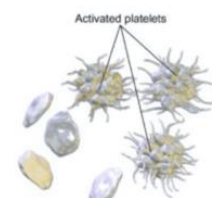
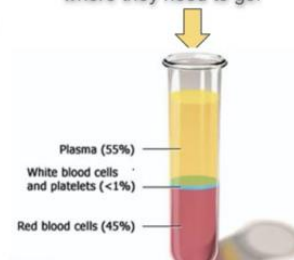


White Blood Cells

White blood cells protect the body from infection so form part of the immune system, they remember germs and they build antibodies against them.

Plasma

Plasma gets rid of the waste in your body, it also carries nutrients, hormones & vitamins. Plasma acts like transport because it is taking RBC, WBC, and platelets to where they need to go.



Platelets

Platelets help when you have a cut on your body because it thickens the blood and acts like a plug. Without platelets, if you had a cut on your finger the blood would keep on pouring out.